



# Blue Mountains Conservation Society Inc

ABN 38 686 119 087

PO Box 29 Wentworth Falls NSW 2782

Phone: (02) 4757 1872

E-Mail: [bmcs@bluemountains.org.au](mailto:bmcs@bluemountains.org.au) Web Site: [www.bluemountains.org.au](http://www.bluemountains.org.au)

**Nature Conservation Saves for Tomorrow**

11 August 2016

To: The General Manager  
Blue Mountains City Council  
Locked Bag 1005  
Katoomba NSW 2780  
By Email to: [council@bmcc.nsw.gov.au](mailto:council@bmcc.nsw.gov.au)

To: Alan Henderson,  
Regional Manager, Blue Mountains National Park  
PO Box 552  
Katoomba NSW 2780  
Via email

Cc: Trish Doyle, Member for the Blue Mountains  
Mark Greenhill, Mayor

## **URGENT: Unauthorised development works, Fairmont Resort, Leura**

Dear Sir,

The Blue Mountains Conservation Society is a community based volunteer organisation with over 830 members. Its mission is to help conserve the natural environment of the Greater Blue Mountains, and to increase awareness of the natural environment in general.

I refer to our recent correspondence of 24 July 2016 to Blue Mountains City Council (copied to the Regional Manager, Blue Mountains National Park) about the legality and environmental impacts of development works that are currently occurring at the Fairmont Resort in Leura (Lot number DP 718860), owned by the Schwartz Family Company. We are still awaiting a reply to the concerns raised in our letter, including whether any regulatory action has been taken by Council and if a retrospective development application has been lodged by the Fairmont.

A closer inspection of the development works and Council mapping raises further concerns with the recent development works at the Fairmont, including the following:

- The development appears to be right on the boundary of the national park, and it is suspected actually encroaches into the national park (see Council mapping showing the land boundary attached). We therefore ask that a land survey is undertaken as part of any future development application to determine exactly the boundary of the national park and the Fairmont, and to ensure the development and associated works are completely within land owned by the Fairmont.
- The road to the new development also appears to be a recent addition. Council aerial mapping (the date taken is unknown) does not show the road while more recent Google maps does (see

attached). It is suspected the road was also completed without development approval, and if so, therefore requires removal or needs to be included in the retrospective development application.

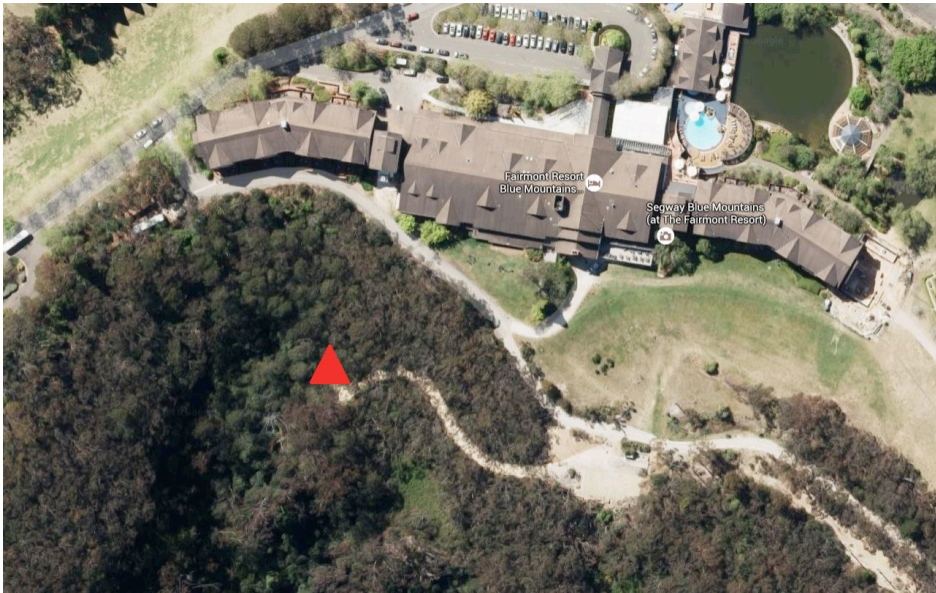
- The road and the recent development works have conclusively impacted on access to Gladstone Pass and the associated heritage walking tracks. As part of any development application a heritage assessment of the impacts of the development on the heritage values of the walking tracks, by a heritage expert with appropriate expertise and knowledge, therefore must be included.

The Society looks forward to an early reply to our letters.

Yours sincerely

A handwritten signature in cursive script that reads "T. Cameron".

Tara Cameron  
Senior Vice President  
Blue Mountains Conservation Society  
mobile 0419 824 974 or email [taracameron4@gmail.com](mailto:taracameron4@gmail.com)



Google Maps showing road present. Red triangle approx. location of new development  
Zoom: 0.32 km



Council aerial mapping (date unknown) showing boundary of national park (green) and no road present